

For our Environment

Umwelt
Bundesamt



KomPass 
Kompetenzzentrum
Klimafolgen und Anpassung

adelphi 

accenture 

Webinar on

Climate risk assessments in the context of the EU Taxonomy

19. April 2023

10 – 11.15 am

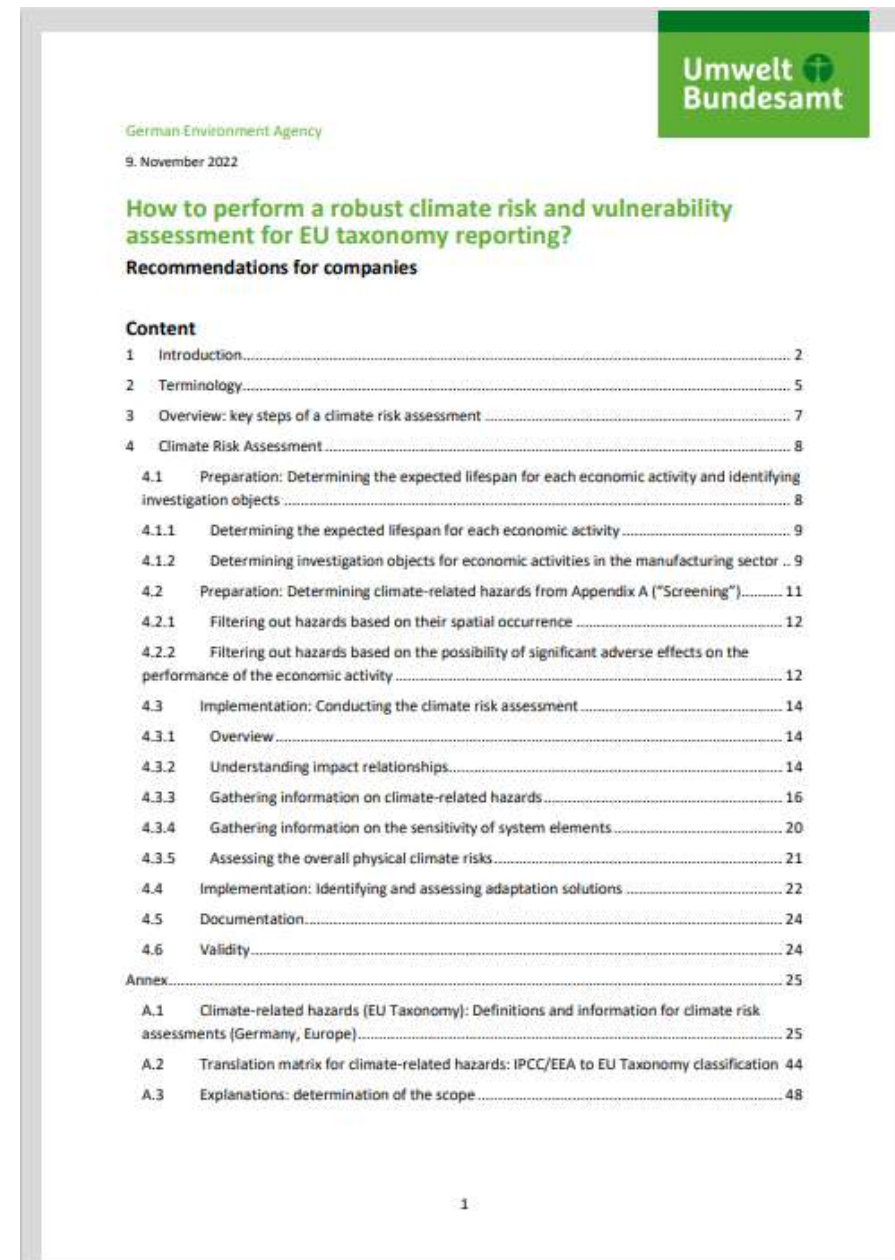
How to perform a robust climate risk and vulnerability assessment for EU taxonomy reporting?

Recommendations for companies

Lukas Dorsch, Christian Kind, adelphi
Thomas Loew, accenture
Inke Schausser, German Environment
Agency (UBA)

Download:

<https://www.umweltbundesamt.de/publikationen/how-to-perform-a-robust-climate-risk-vulnerability>



Agenda

10:00	Start of the event	
10:00	Welcome, overview of the agenda and introduction to climate risk assessments in Europe	UBA
10:10	<p>Presentation of recommendations on how to perform a robust climate risk and vulnerability assessment for EU Taxonomy reporting:</p> <ul style="list-style-type: none"> • Overview on the role of climate risk assessments in the EU Taxonomy and the requirements for such assessments • Presentation of key steps: preparation, screening, climate risk assessment, identification of adaptation solutions 	adelphi and Accenture
10:30	Envisaged practical challenges in carrying out a robust climate risk and vulnerability assessment for EU Taxonomy reporting	Prof. Dr. Oliver Beyhs, Certified Public Auditor (GER), Management Advisor
10:40	Questions and discussion	All
11:10	Outlook and farewell	UBA
11:15	End of the event	

For our Environment

**Umwelt
Bundesamt**



KomPass 
Kompetenzzentrum
Klimafolgen und Anpassung

Climate risk assessments in Europe and Germany

Dr. Inke Schauser

German Environment Agency (UBA)
KomPass - Climate Impacts and Adaptation

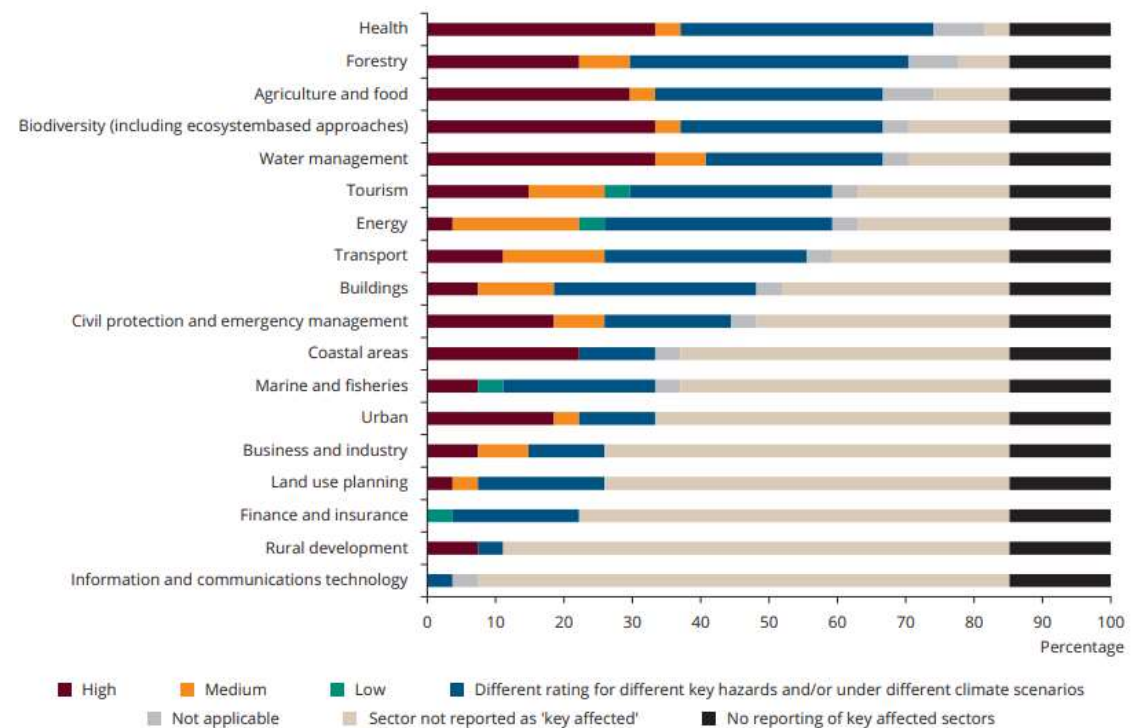
National Adaptation Strategies (NAS) and Climate Risk Assessments (CRA) in Europe

- Since **2004** EEA reports on climate change, impacts and vulnerabilities
- **2005** first NAS (Finland)
- **2013** European Adaptation Strategy (updated 2020)
- **2021** all EU member states had NAS and CRA
- **2024** European Climate Risk Assessment (EUCRA)

More information:

<https://climate-adapt.eea.europa.eu/>

Figure 2.3 Risk of future climate impacts on key affected sectors



Notes: Data are for the EU-27. The graph includes 236 out of 249 reported key affected sectors.

Source: EEA (2022b).

EEA Report No 11/2022

Advancing towards climate resilience in Europe: status of reported national adaptation actions in 2021

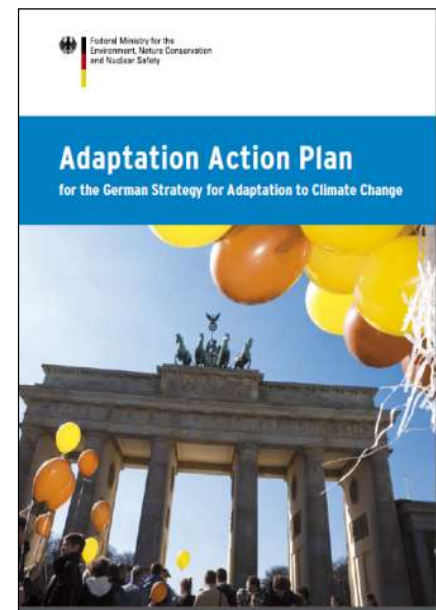
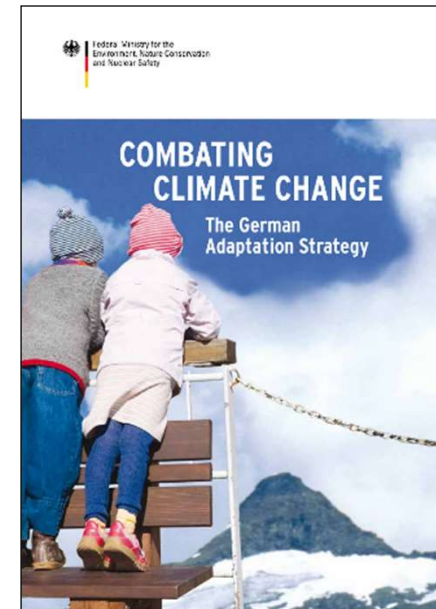
National Adaptation in Germany

Process

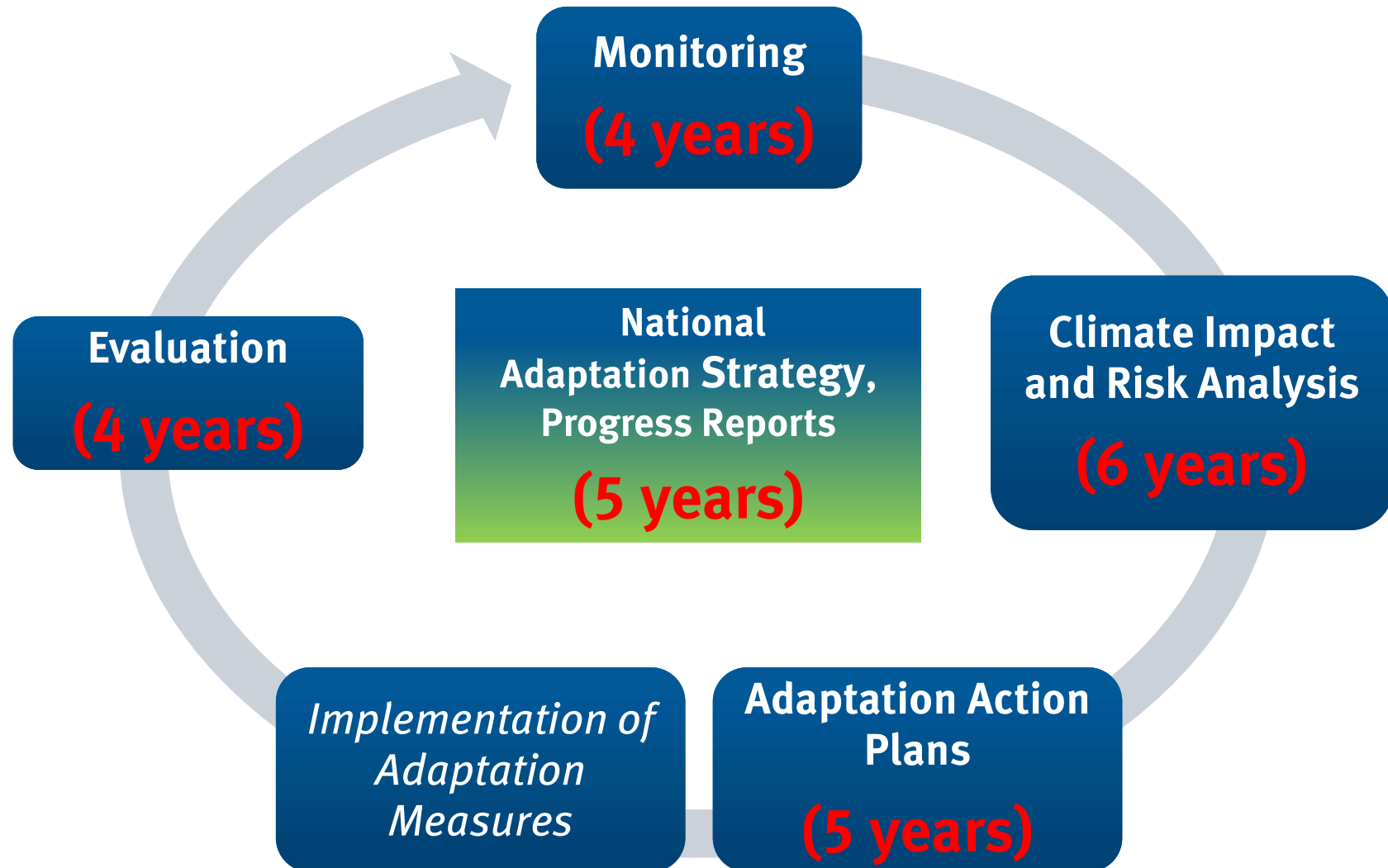
- 2005 first climate impacts and risk assessment
- 2008 National Adaptation Strategy (**DAS**)
- 2011 first Adaptation Action Plan (APA)

Cross sectoral

- | | |
|---------------------------------------|-----------------------------|
| • public health | • energy |
| • biodiversity | • transport, infrastructure |
| • soil | • tourism |
| • agriculture, forestry and fisheries | • industry & commerce |
| • water management | • finance |
| • coastal & marine protection | Cross cutting issues: |
| • building, construction | • land use planning |
| | • civil protection |



Iterative adaptation process



National Climate Impact and Risk Assessment (KWRA 2021)

In which fields of action, for which climate impacts and in which regions in Germany are there particularly

- **high climate risks?**
- **low adaptation capacities?**
- **urgent need for action?**

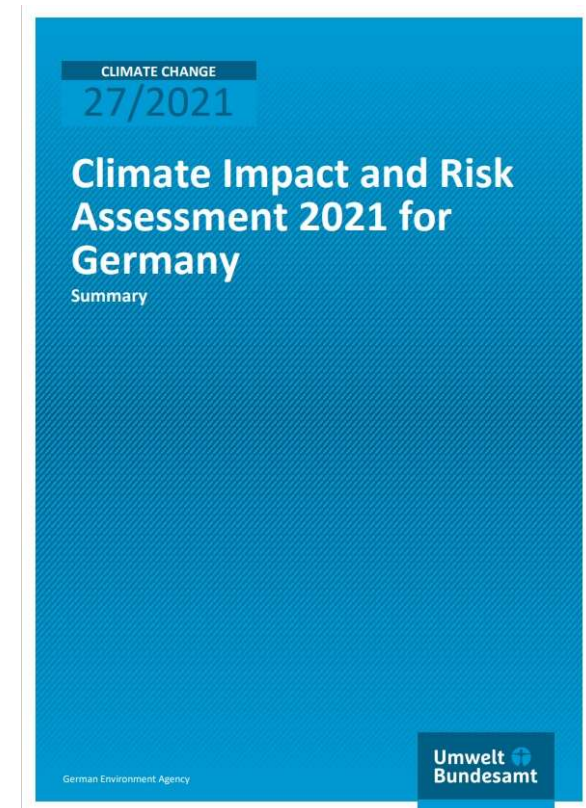
→ Priorisation as basis for adaptation action planning

Ca. 180 experts from 25 authorities from 9 ministries, external experts and a scientific consortium

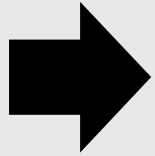
→ Collaborative process (co-production): to rise awareness and ownership

<https://www.umweltbundesamt.de/publikationen/KWRA-English-Summary>

[Climate Impact and Risk Assessment 2021 - YouTube](#)

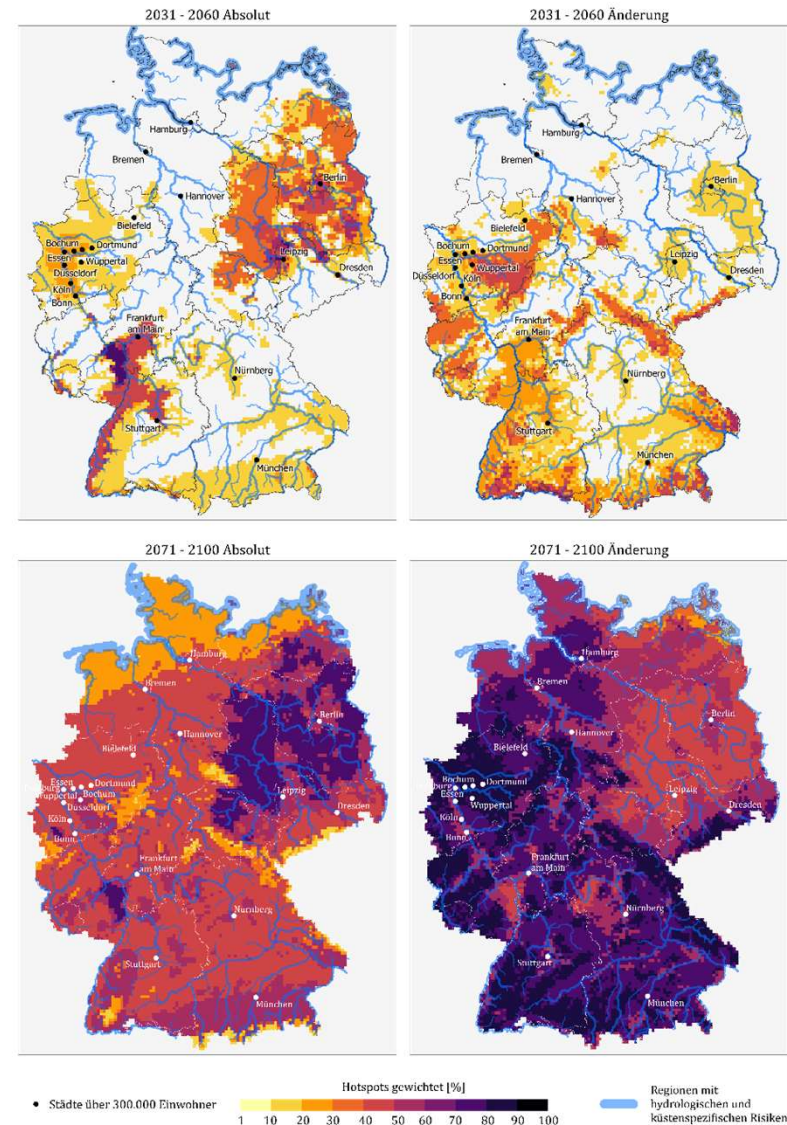


KWRA results: quantitative and qualitative Information

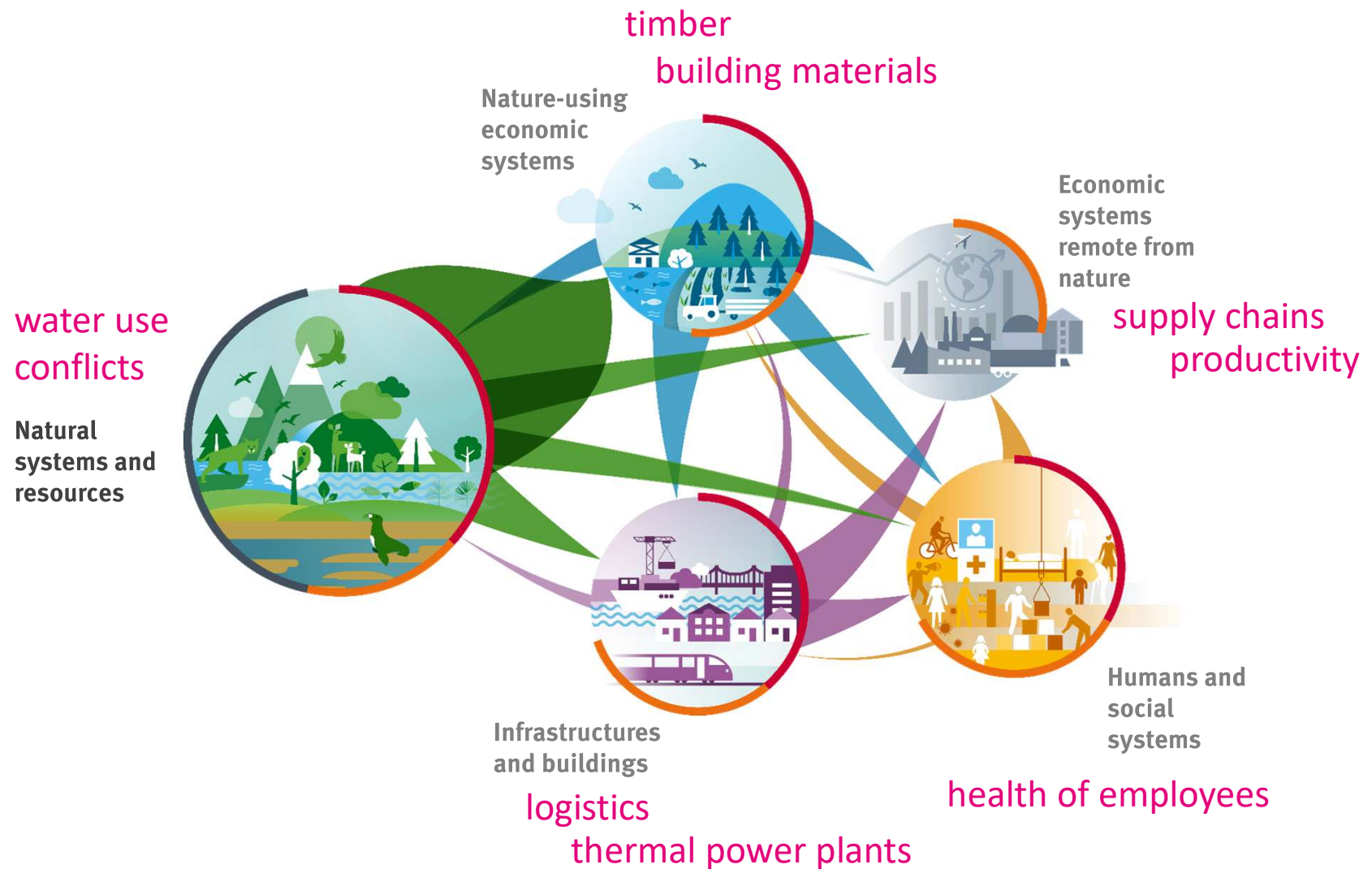


31 climate risks with very urgent need for action

- ▶ Climate risks from **heat for health**, especially in urban areas
- ▶ Climate risks from **drought and low water** (often associated with heat) for all water-using and water-dependent systems.
- ▶ Climate risks from **heavy rainfall, flash floods and flooding**, especially for infrastructure and buildings; settlements near water bodies or in narrow valleys in the low mountain ranges are primarily affected.
- ▶ Climate risks from **gradual temperature rise**, such as **sea-level rise**, for natural and nature-using systems.



KWRA results: direct risks and cascading effects



Source: German KWRA 2021

Thanks for your attention!

Inke Schauser

Inke.schauser@uba.de

www.uba.de

