

# Aluminium Stewardship Initiative

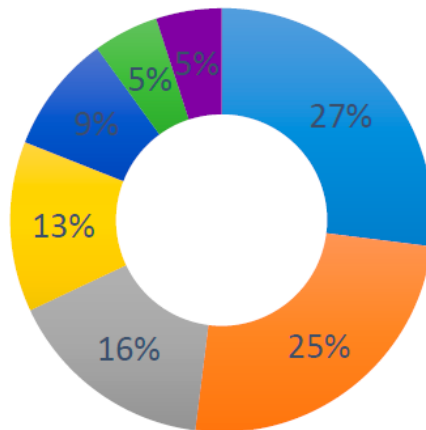
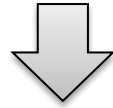
Supply chain cooperation in aluminium production, sourcing and stewardship – experiences from the Aluminium Stewardship initiative (ASI)

Dr Fiona Solomon, CEO

European Resources Forum, November 2016

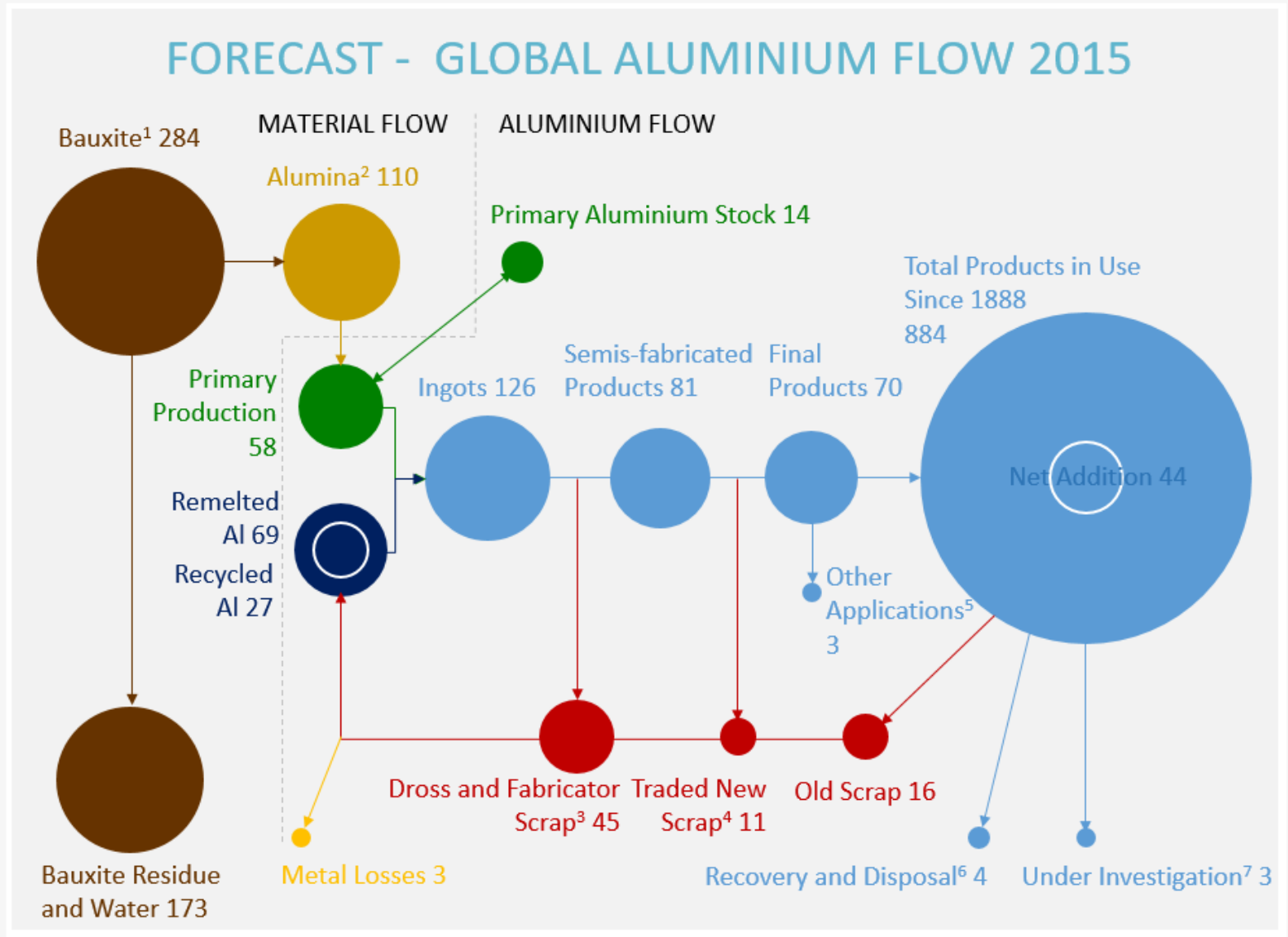
# Aluminium – global production and use (2014)

54 million metric tonnes of primary aluminium  
+  
25 million metric tonnes of recycled aluminium



- Transport
- Construction
- Foil and packaging
- Electrical engineering
- Machinery and equipment
- Consumer goods
- Other

# Aluminium – global flows



# Aluminium Stewardship Initiative (ASI)



Responsible  
production

Responsible  
sourcing

Material  
stewardship

ASI is working  
with  
stakeholders to  
develop an

independent  
third party  
certification  
program

for the  
aluminium  
value chain.

# ASI members (36)

---

## Production and Transformation

- Alcoa
- Aleris
- AMAG
- Ball Corporation
- Constantia Flexibles
- Constellium
- Norsk Hydro
- Novelis
- Rio Tinto Aluminium Division
- Tetra Pak
- UC RUSAL

## Industrial Users

- Audi
- BMW Group
- Coca-Cola Enterprises
- Jaguar Land Rover
- Lavit
- Nestlé Nespresso SA
- Schüco

## Associations

- Aluminium Federation (Alfed)
- Aluminium Association of Canada
- Associação Brasileira do Alumínio (ABAL)
- Australian Aluminium Council
- A|U|F e.v.
- Council for Aluminium in Building
- European Aluminium
- Gulf Aluminium Council
- IGORA Cooperative for Aluminium Recycling
- The Aluminum Association

## Civil Society

- Chimbo Foundation
- Fauna and Flora International
- IUCN
- Keep America Beautiful
- Verite
- WWF

## General Supporters

- Regain Materials
- Energia Potior

# ASI – a brief history

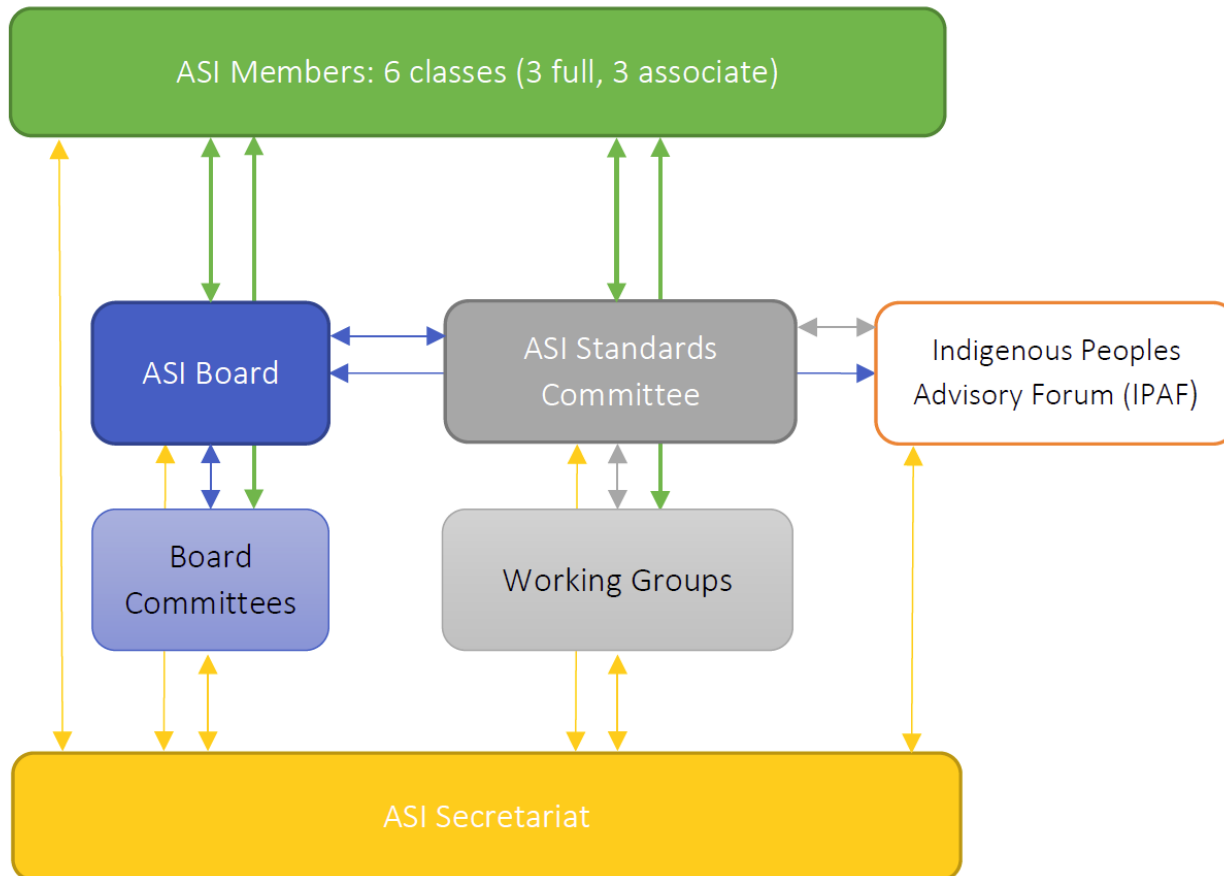
---

- 2009** Multi-stakeholder group on ‘responsible aluminium’
- 2010** Report recommending third-party certification system
- 2011** Agreement to develop ASI work program
- 2012** IUCN appointed as coordinator for multi-stakeholder standards-setting process
- 2014** ASI Performance Standard published
- 2015** ASI incorporated and governance models developed
- 2016** First AGM, Constitution adopted, certification model in development



© Rio Tinto

# ASI governance – working in partnership



# Voluntary sustainability standards

---

Having impact in a wide range of sectors and issues:

- **Agriculture:** eg forestry, fisheries, tea/coffee/cocoa
- **Mining:** eg EITI, Voluntary Principles on Security and Human Rights
- **Gold:** eg Responsible Jewellery Council, Fairmined, OECD Due Diligence Guidance

What standards and certification programs can do:

- Help companies attain their social and environmental objectives
- Build multi-stakeholder consensus on what are responsible practices
- Provide independent assurance of systems and performance
- Support relevant regulatory and compliance requirements
- Reduce duplication of effort and costs through standardisation
- Support responsible sourcing and help to “de-risk” supply chains



# Key sustainability issues for ASI

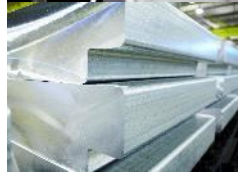
Bauxite mining



Alumina production



Aluminium production



Semi-fabrication



Product manufacture and use



Recycling



Images © Rio Tinto and Novelis

Biodiversity management

Indigenous Peoples rights

Greenhouse gas emissions  
for refining and smelting

Bauxite residue, spent pot  
lining and dross

Material stewardship

# ASI Performance Standard (2014)

---

## Governance

1. Business Integrity
2. Policy and Management
3. Transparency
4. Material Stewardship

## Environment

5. Greenhouse Gas Emissions
6. Emissions, Effluents and Waste
7. Water
8. Biodiversity

## Social

9. Human Rights
10. Labour Rights
11. Occupational Health and Safety

# ASI Chain of Custody Standard

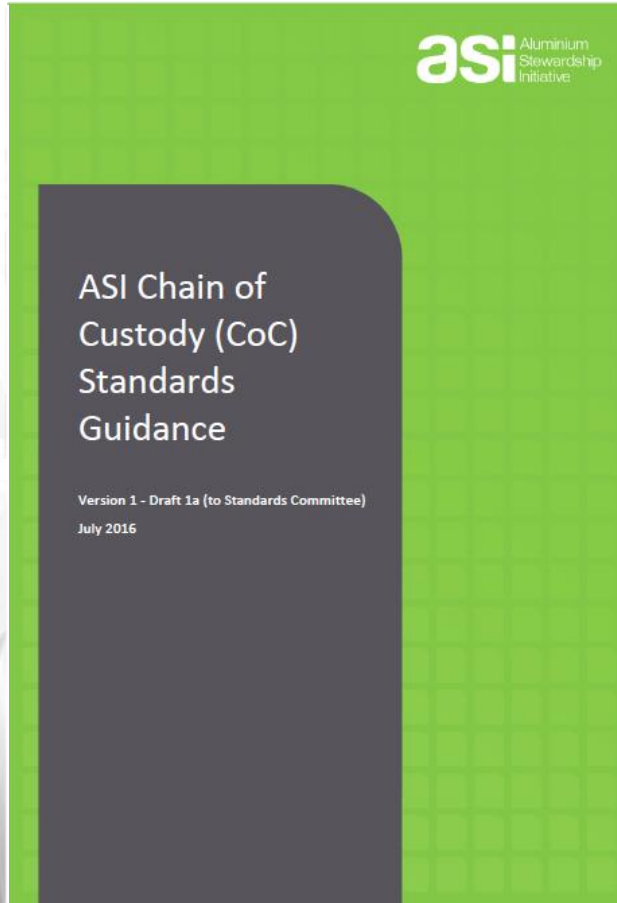
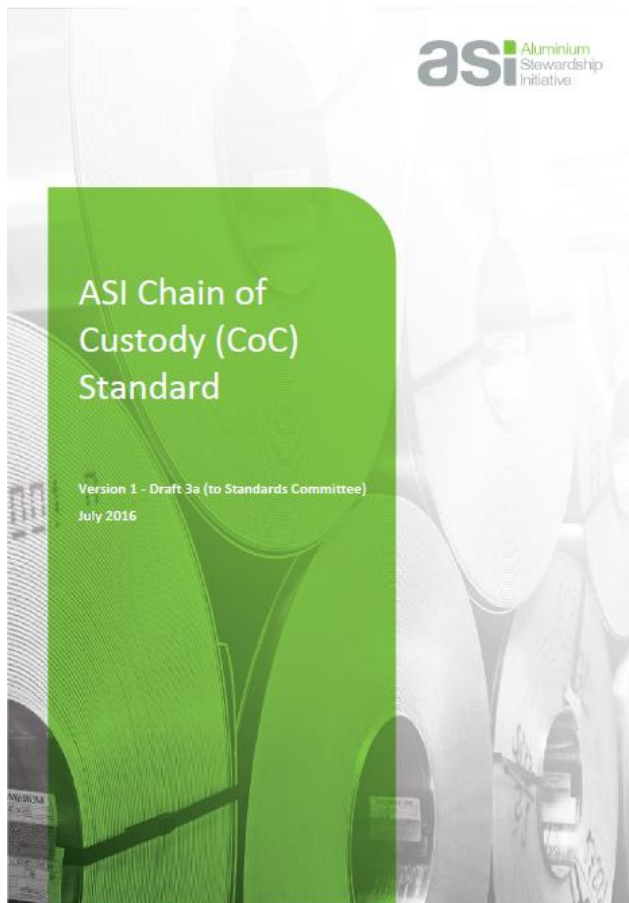
---

- A Chain of Custody (CoC) Standard can be used to demonstrate responsible production and meet responsible sourcing expectations
- A mass-balance model is being proposed, which can be applied at the company and/or facility level
- Accommodates both primary and secondary aluminium
- Public comment period on draft CoC Standard and Guidance currently open October-December 2016



# ASI Chain of Custody Standard and Guidance

---



## Other relevant documents:

- ASI Claims Guide
- ASI Assurance Manual
- Audit protocols
- ASI Performance Standard (plus Guidance) – *will be re-issued in this format in late 2017.*

# Key milestones to ASI certification program

---

## 2015 – General frameworks

- Incorporate ASI as not-for-profit entity, now registered Charity
- Develop governance and business model
- Stakeholder outreach

## 2016 – Implementation model

- Develop assurance model
- Develop **chain of custody** standard with stakeholder consultation
- Develop auditor accreditation process

## 2017 – Preparing for operation

- Pilot testing of standards and assurance model
- Finalisation of all normative documents
- **Target end 2017: ASI Certification ready to begin operation**

# Desired impacts of ASI

---

1. **Sustainability and human rights** principles are increasingly embedded in aluminium production, use and recycling
2. Companies increasingly **invest in and reward** improved practices and responsible sourcing for aluminium
3. Aluminium **continues to improve** its sustainability credentials with stakeholders



Dr Fiona Solomon  
ASI Chief Executive Officer  
[fiona@aluminium-stewardship.org](mailto:fiona@aluminium-stewardship.org)

ASI Website  
[www.aluminium-stewardship.org](http://www.aluminium-stewardship.org)

Join the ASI mailing list  
<http://aluminium-stewardship.org/mailing-list/>

