

Setup Guide

Chemical Register

The project was funded by the German Federal Ministry for Environment, Nature Conservation, and Nuclear Safety (BMUM) under Advisory Assistance Programme for Environmental Protection in Central and Eastern European countries, the Caucasus and Central Asia, as well as other countries neighboring the European Union. It was supervised by the Federal Environment Agency (UBA). The responsibility for the content of this publication lies with the authors.



Table of Contents

Introduction	4
Initial Setup	5
1. Download the Project folder to the path C:\.	5
2. Run script_prestart as Administrator.	5
3. Restart	6
4. Configure SQL Database	6
5. Set Credentials	6
6. Run script_setup as Administrator.	6
SQL Server Configuration	7
1. Run "SQL Server 2017 Configuration Manager" Program	7
2. Click on "Protocols for MSSQLSERVER"	8
3. Click on "TCP/IP"	8
4. Open "IP Addresses" tab	9
5. Enable "IP4"	10
6. "SQL Server Agent" Menu	10
7. Enable "SQL Server Agent"	11
8. Enable SQL Connection from SSMS	11
Setting up the credentials	13
Create SQL User	13
1. New Login	13
2. Server Roles	14
Configurations for SQL and Email	15
1. Configurations for SQL	15
2. Configurations for Email	16

Introduction

While chemicals contribute significantly to national economies and are an indispensable component of everyday life, sound management is essential to avoid risks to human health and the environment. Reliable information on chemicals is required to inform national decision-making and thus minimize the negative effects of chemicals on humans and the environment. The Strategic Approach to International Chemicals Management (SAICM) states that “knowledge and information are basic needs for decision-making for the sound management of chemicals, including products and articles containing chemicals”¹.

Lack of clear, accessible, timely, appropriate information for sound management of chemicals in order to minimize their negative effects on human health and the environment has been recognized by many countries and in the WHO European Region² (2).

Registration of chemicals and relevant national inventories allow the identification and prioritization of chemicals of concern, preparation of monitoring and risk assessment strategies and prevention of illegal traffic and stimulate capacity-building. Collection of information on hazardous chemicals can also facilitate the adoption of appropriate decisions related to chemicals management.

Creation of technical basis for on-line registration of chemicals including to ensure collection of information on their hazardous properties was the main objective of the project “Establishment of key elements of national systems for sound management of chemicals in selected countries in Eastern Europe, Caucasus and Central Asia (Belarus, Georgia, and Kazakhstan) funded by the German Environment Agency through its Advisory Assistant Programme.

A server-based software allowing on-line registration of industrial chemicals and biocides was developed by the project IT-team led by the National Centre for Diseases Control and Public Health (Georgia). It consists three parts – registration of a company/registrant, registration of individual chemicals and registration of chemical mixtures.

Guidance is needed to install the programme on national servers. It will make easier to use the programme in other countries that were not directly involved in the project implementation.

This paper was prepared to guide the programme installation process at national servers in countries that would like to set a system for on-line registration of chemicals.

¹ Overarching policy strategy. Geneva: Strategic Approach to International Chemicals Management; 2017(<http://www.saicm.org/Resources/Publications/tabid/5507/language/en-GB/Default.aspx>).

² Overall orientation and guidance for achieving the 2020 goal of sound management of chemicals. In: Fourth session of the International Conference on Chemicals Management (ICCM4). Geneva: Strategic Approach to International Chemicals Management; 2015 (http://old.saicm.org/index.php?option=com_content&view=article&id=525&Itemid=700).

Initial Setup

This chapter sets up the project by downloading and installing dependencies, configuring system features, restoring databases, and compiling projects.

1. Download the Project folder to the path C:\.

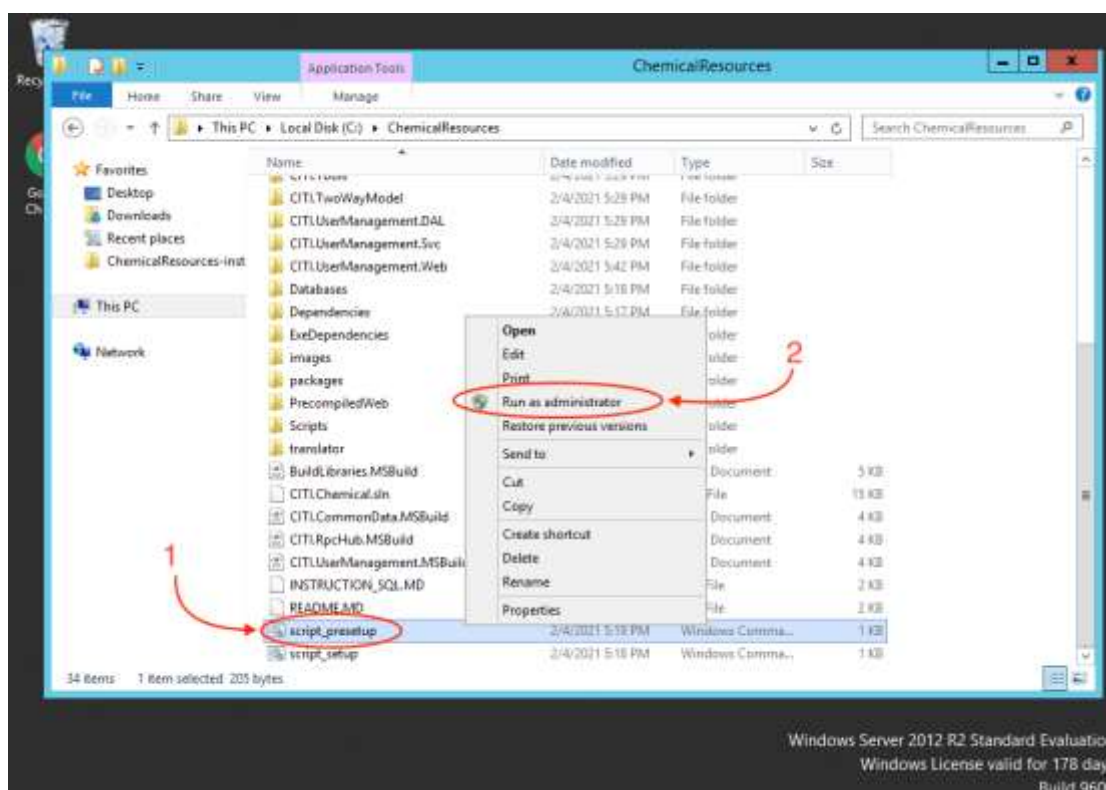
Download the Project folder to the path c:\. It should be located in the drive's root directory, because of permission issues.

2. Run script_prestart as Administrator.

Run script_prestart as Administrator. This script downloads and installs dependencies, after configures the system and restores scratch databases.

Whenever any installation program asks for a restart, don't accept. Restart only after all programs are installed.

If the program asks you to confirm installation, preferably you will need to accept it. (If not accepted required programs will not be installed)



3. Restart

Restart the computer after all programs have been successfully installed.

4. Configure SQL Database

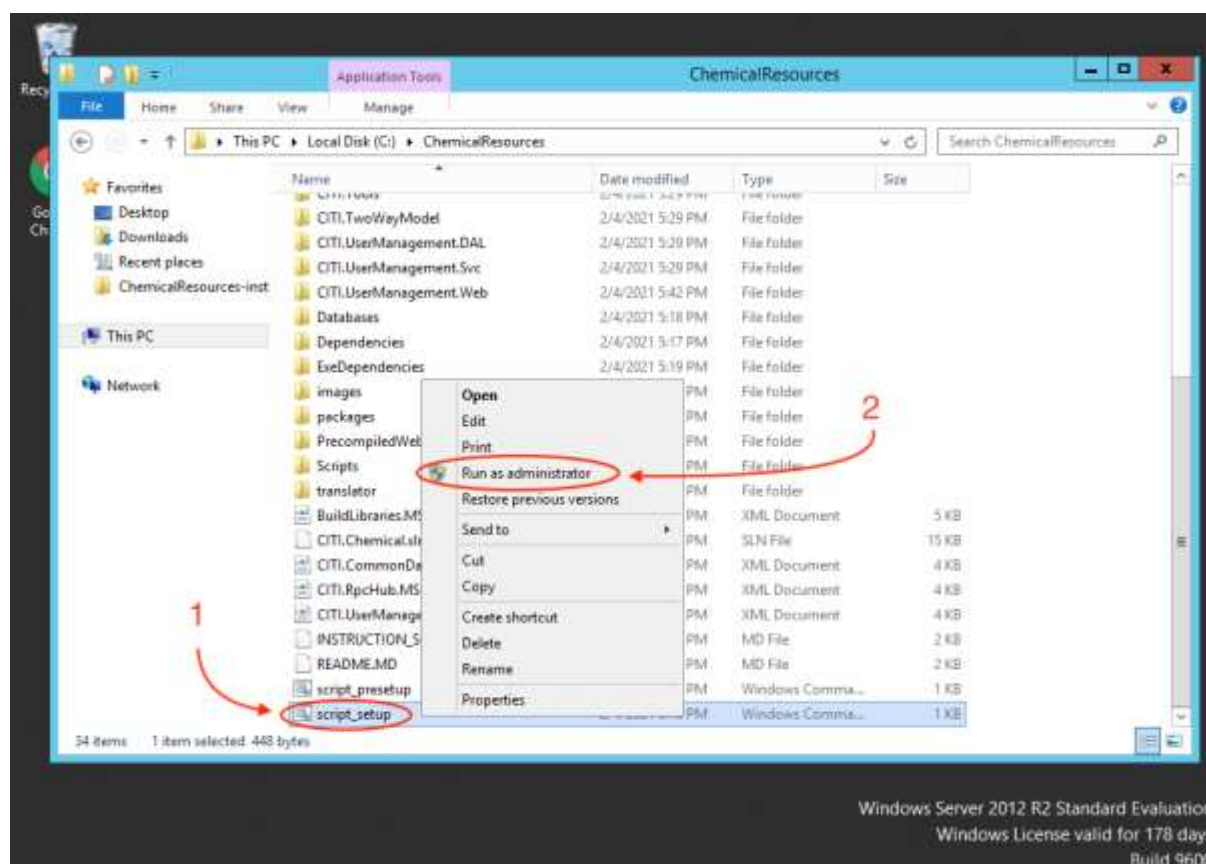
Follow the [INSTRUCTION FOR SQL SERVER](#).

5. Set Credentials

Follow the [INSTRUCTION FOR CREDENTIALS](#).

6. Run script_setup as Administrator.

Run script_setup as Administrator. This script compiles projects.



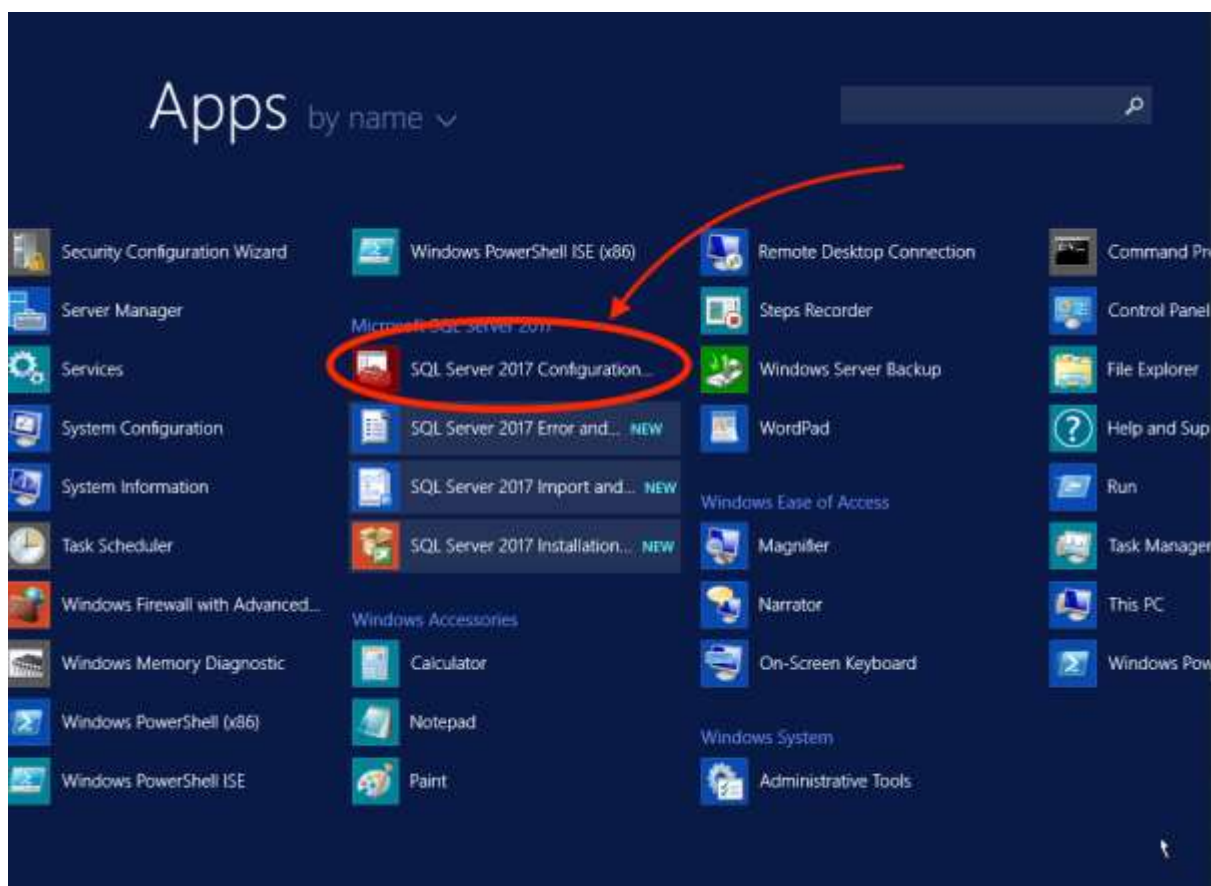
SQL Server Configuration

This chapter covers how to configure SQL Server for the following tasks:

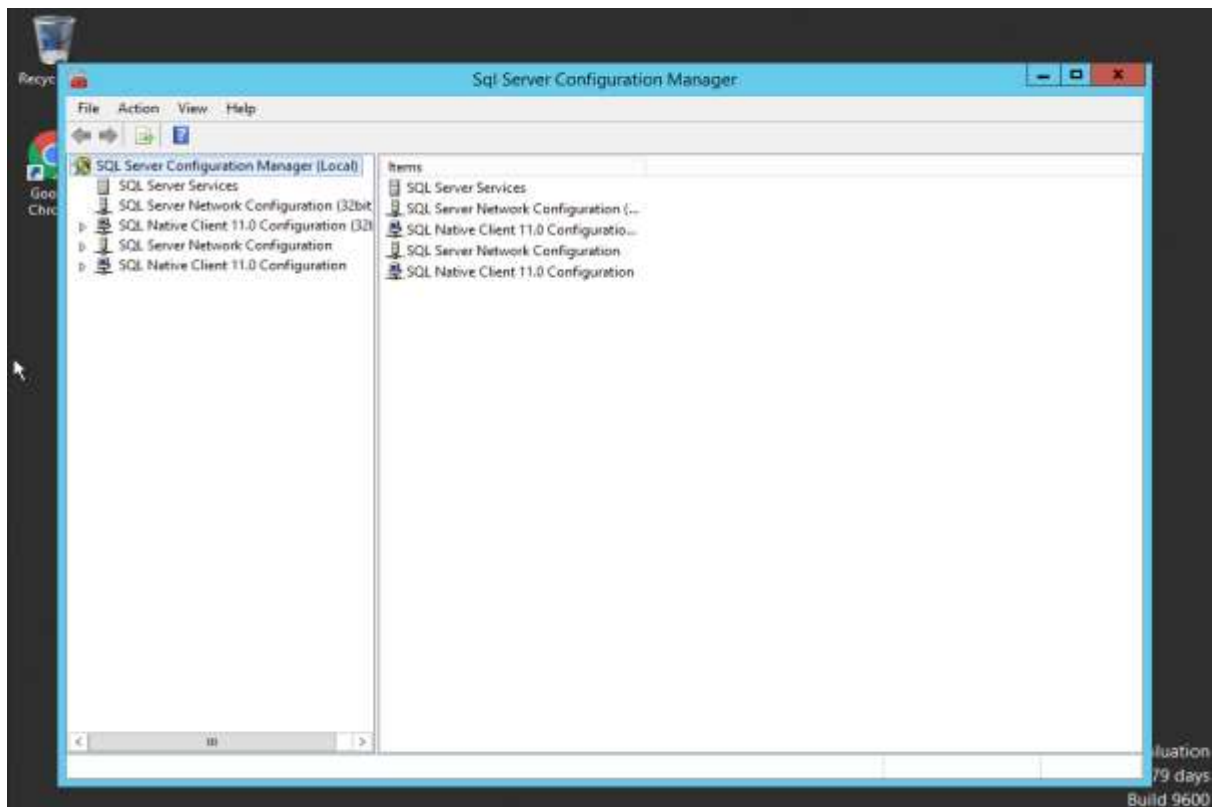
- Open TCP/IP connection
- Run SQL Server Agent (for back-up tasks)
- Enable SQL connection

1. Run "SQL Server 2017 Configuration Manager" Program

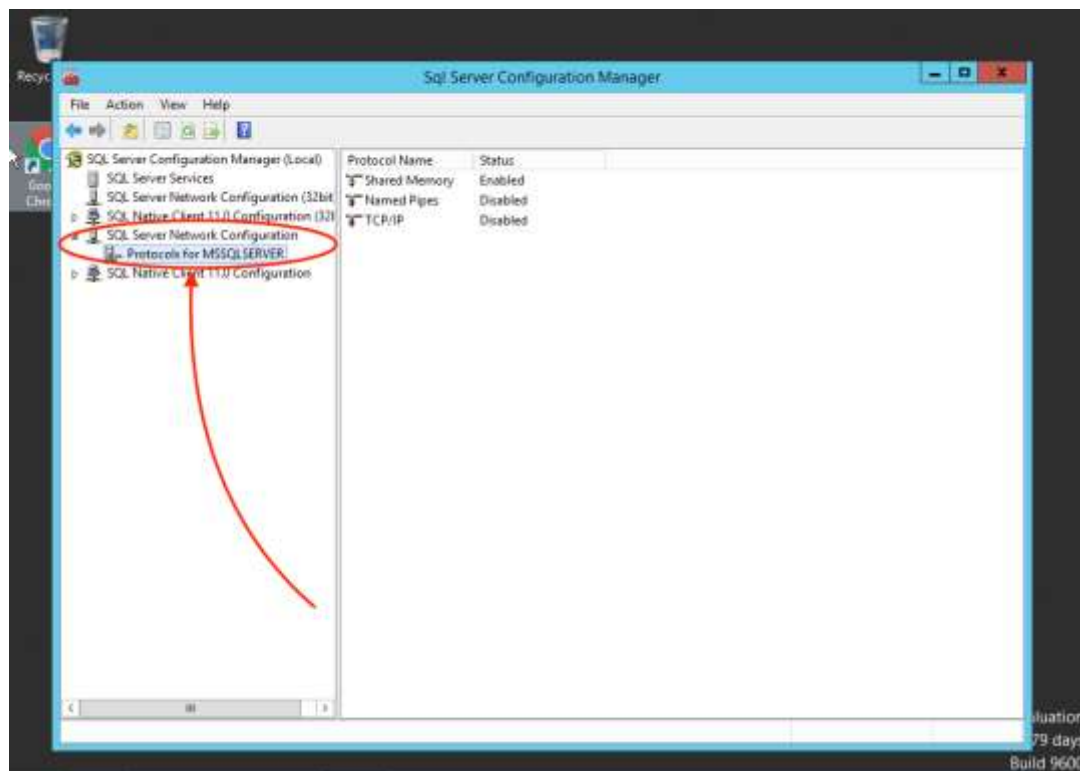
You can find it in the applications list.



After clicking on the application, the program interface is on the screenshot below.

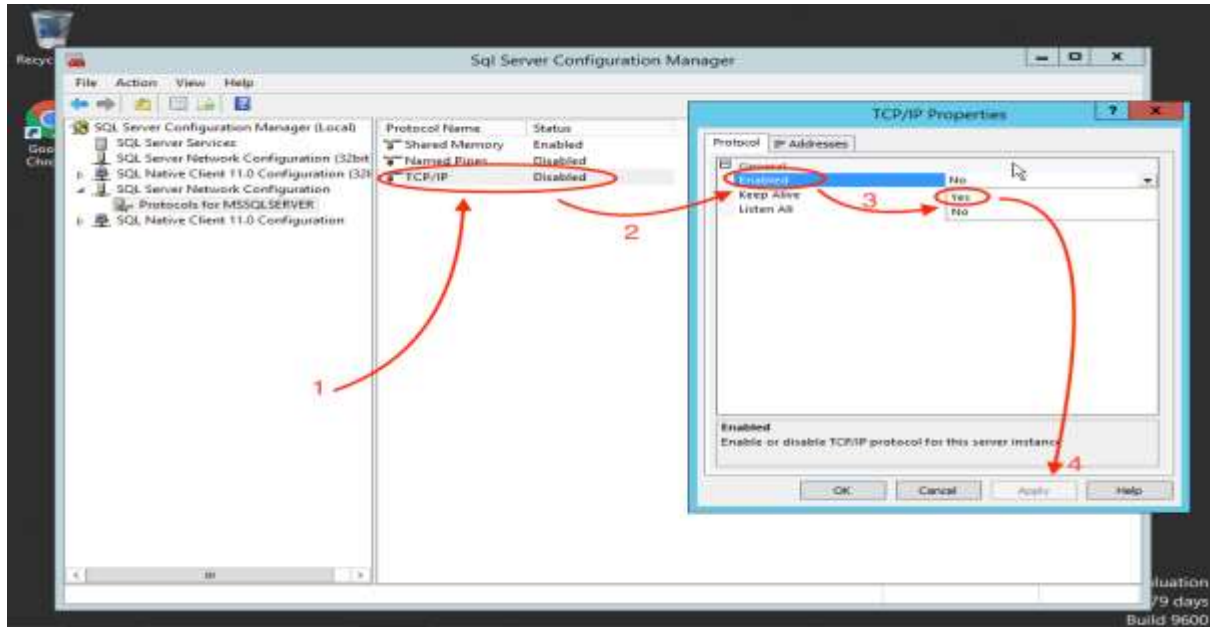


2. Click on "Protocols for MSSQLSERVER"



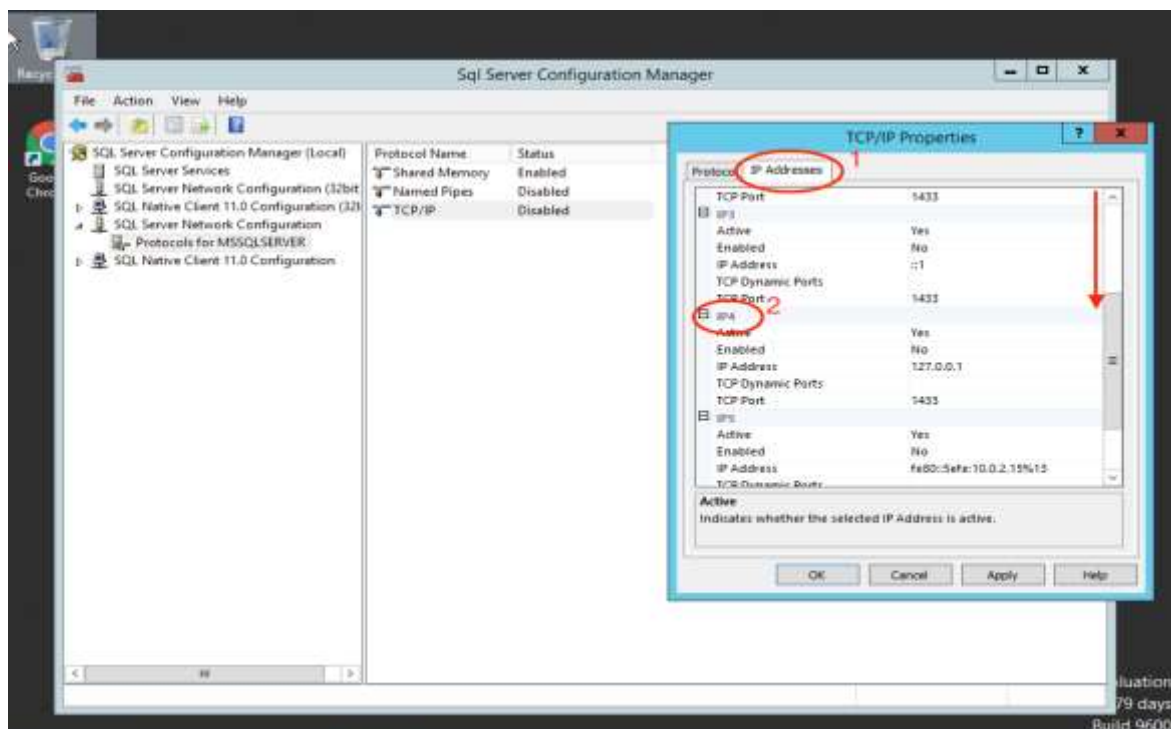
3. Click on "TCP/IP"

1. Double click on TCP/IP. TCP/IP Properties window will open.
2. Change Enabled property to Yes
3. Click on Apply



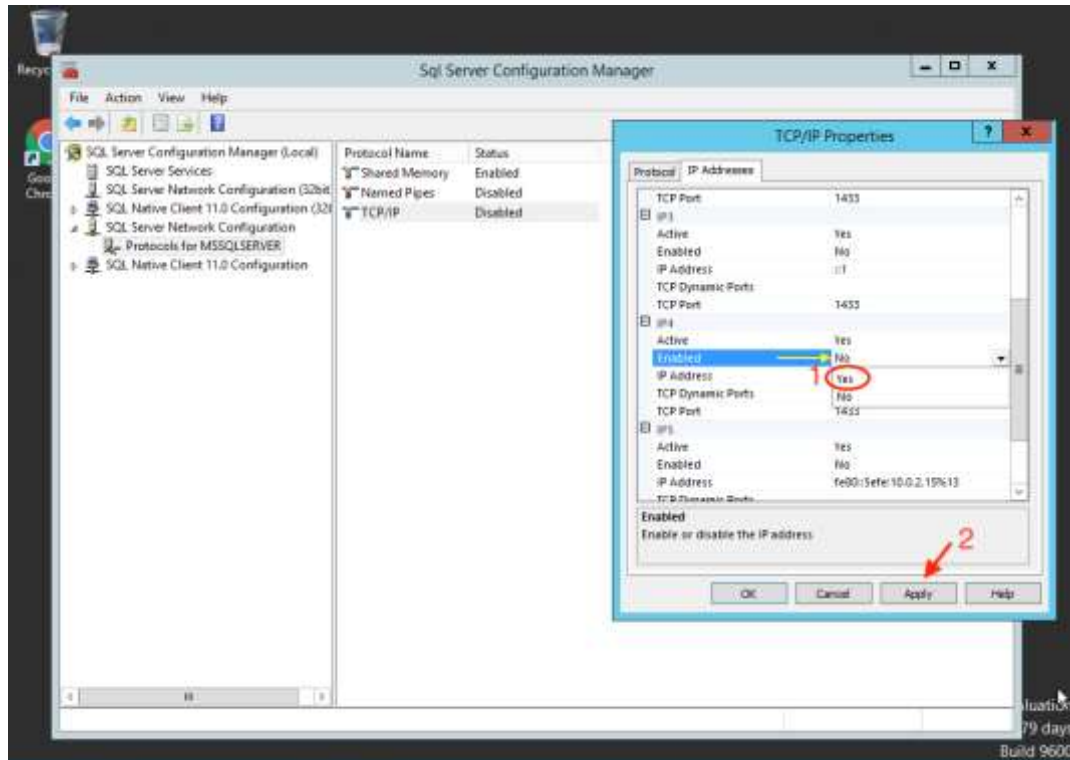
4. Open "IP Addresses" tab

1. In the current window click on IP Addresses tab.
2. Scroll down to IP4 section



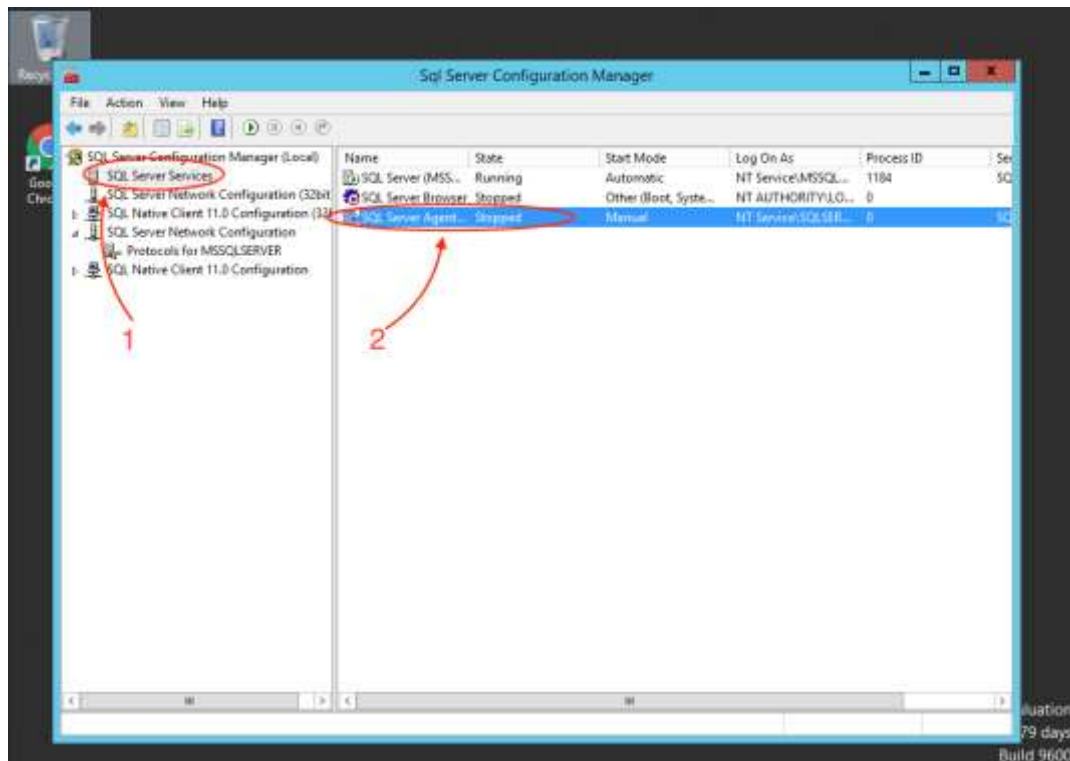
5. Enable "IP4"

1. In the IP4 section change Enabled property to Yes.
2. Click on Apply
3. Close TCP/IP Properties window.



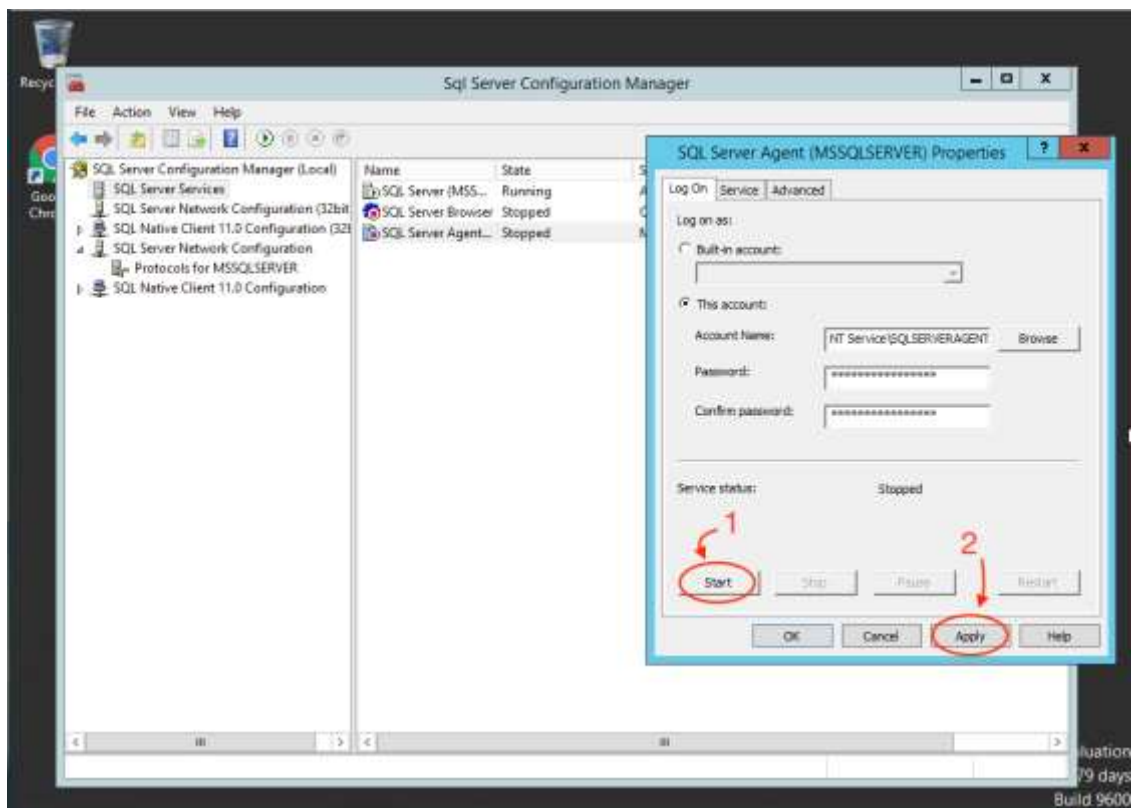
6. "SQL Server Agent" Menu

1. In the left-side menu click on SQL Server Services
2. Click on SQL Server Agent



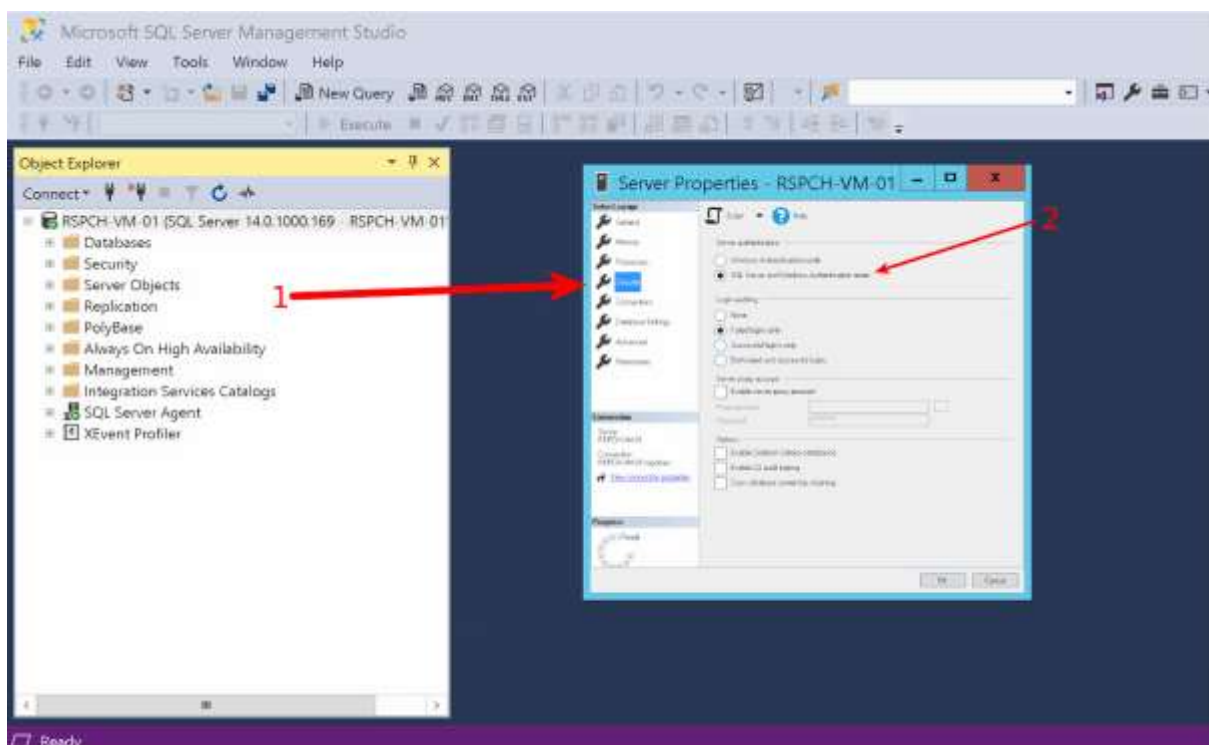
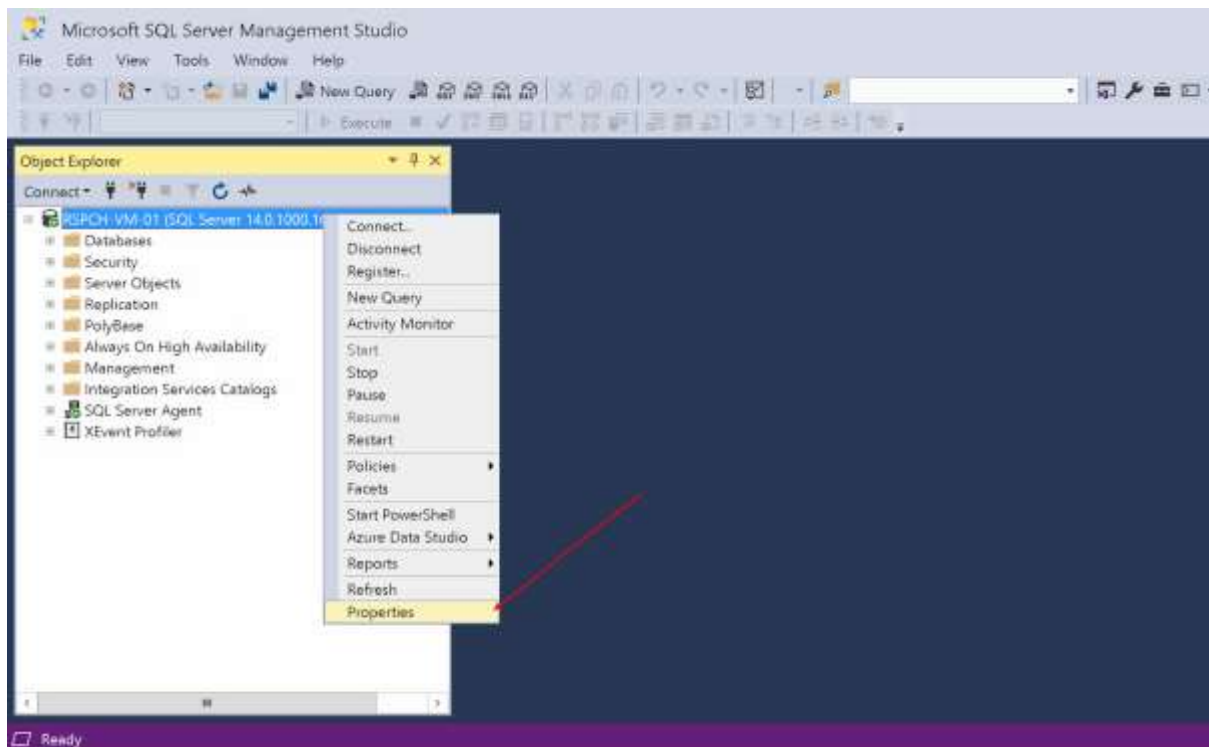
7. Enable "SQL Server Agent"

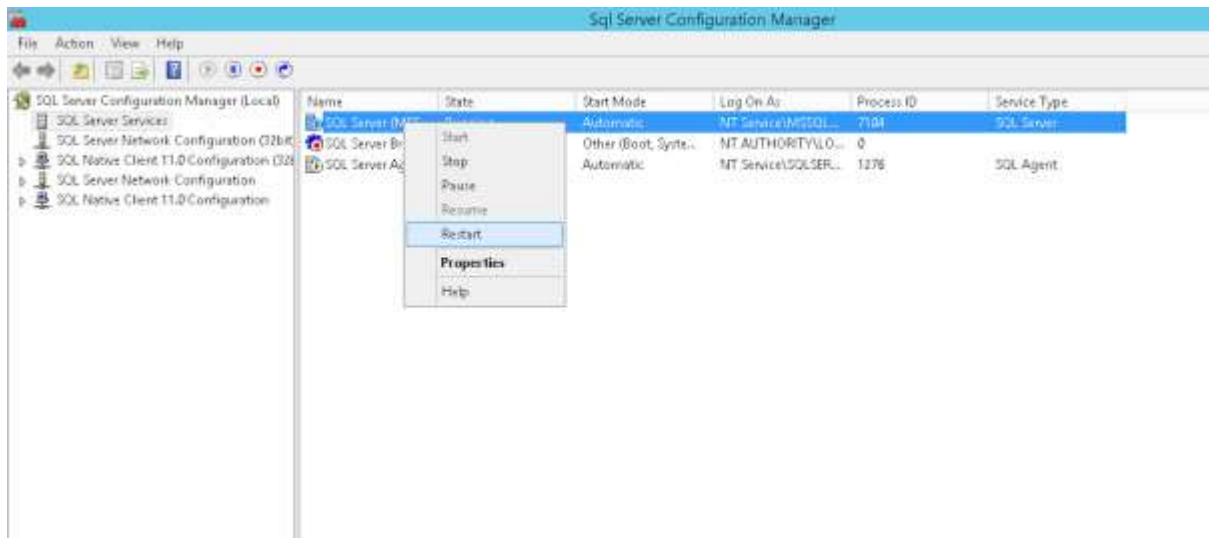
1. Click on Start
2. Click Apply.



8. Enable SQL Connection from SSMS

1. Open Microsoft SQL Server Management Studio.
2. Right-click on a server instance and click on Properties field.
3. Window will open, click on Security menu field.
4. Enable SQL Server and Windows Authentication mode by choosing the corresponding radio button.





Setting up the credentials

This chapter covers how to setup credentials for SQL Server and Email sender. Overview:

1. Create SQL User
2. Set Hibernate configs for SQL user
3. Set Email sender configurations

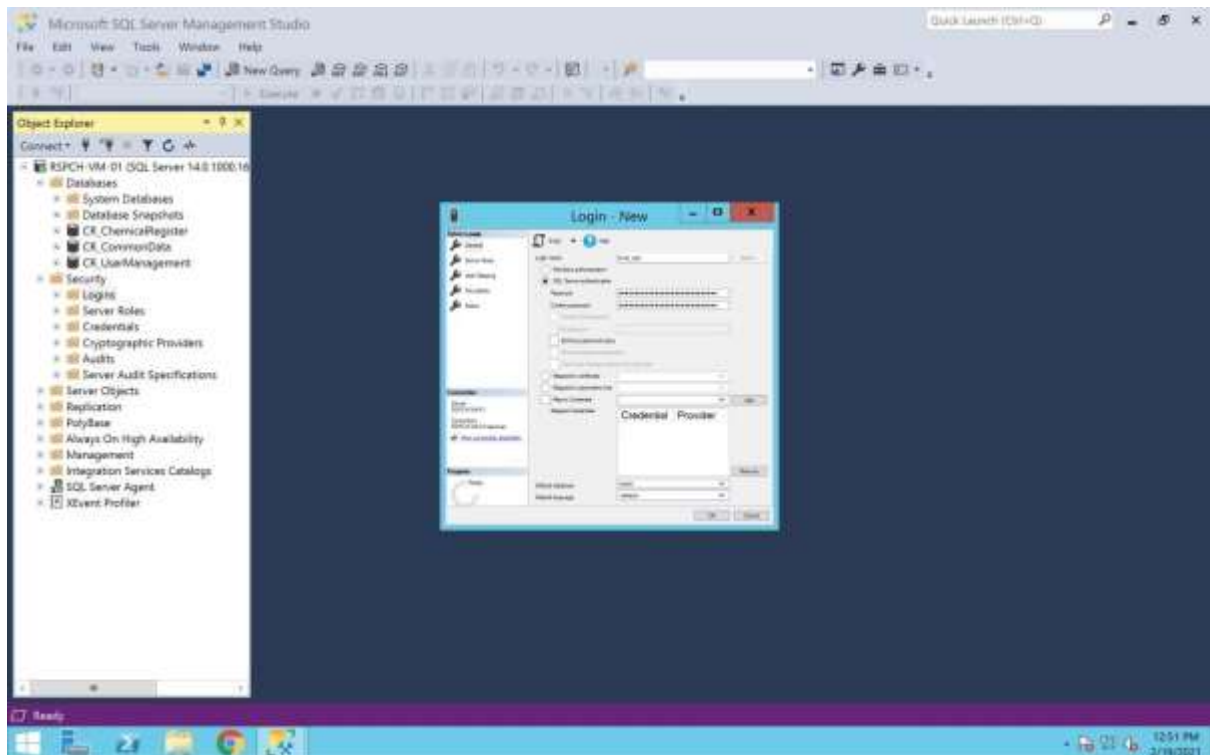
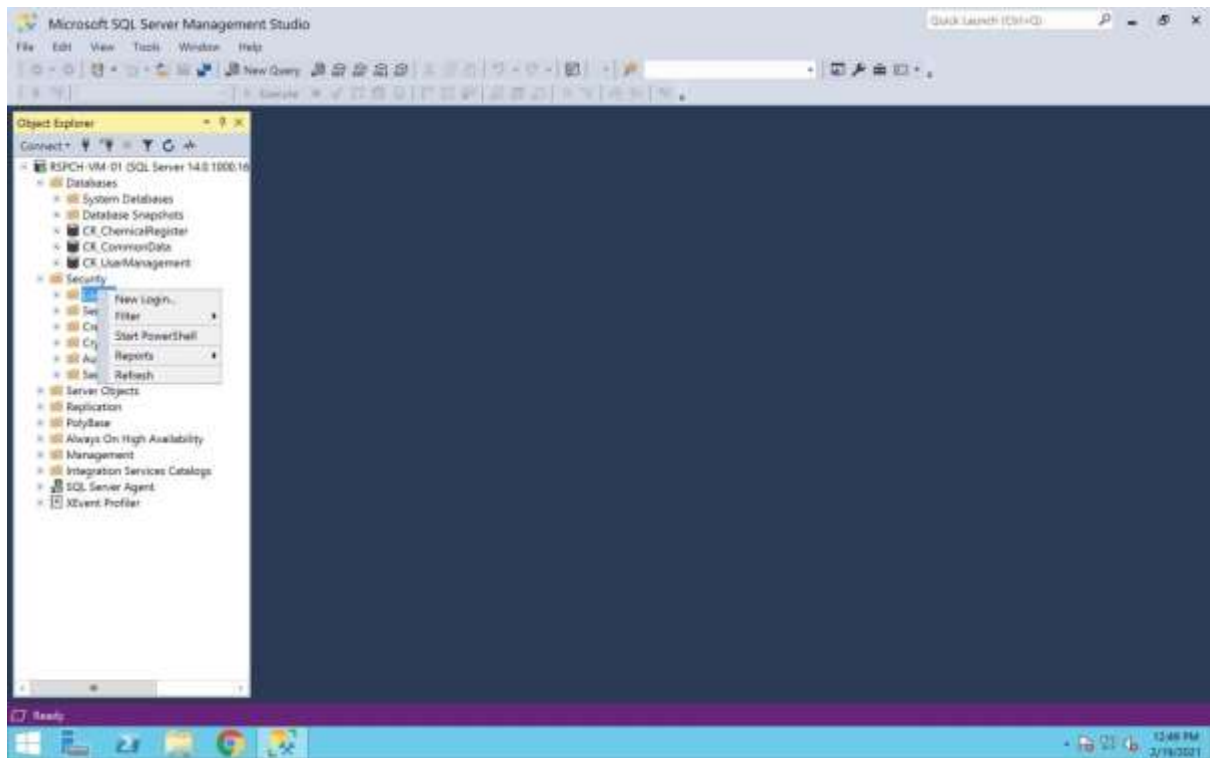
Before you get started, create a Gmail account that will be used to send emails. Also, you will need to enable Less Secure Apps Authentication - instructions available by the [LINK](#)

Create SQL User

In this section, we will create SQL user from Microsoft SQL Server Management Studio (SSMS).

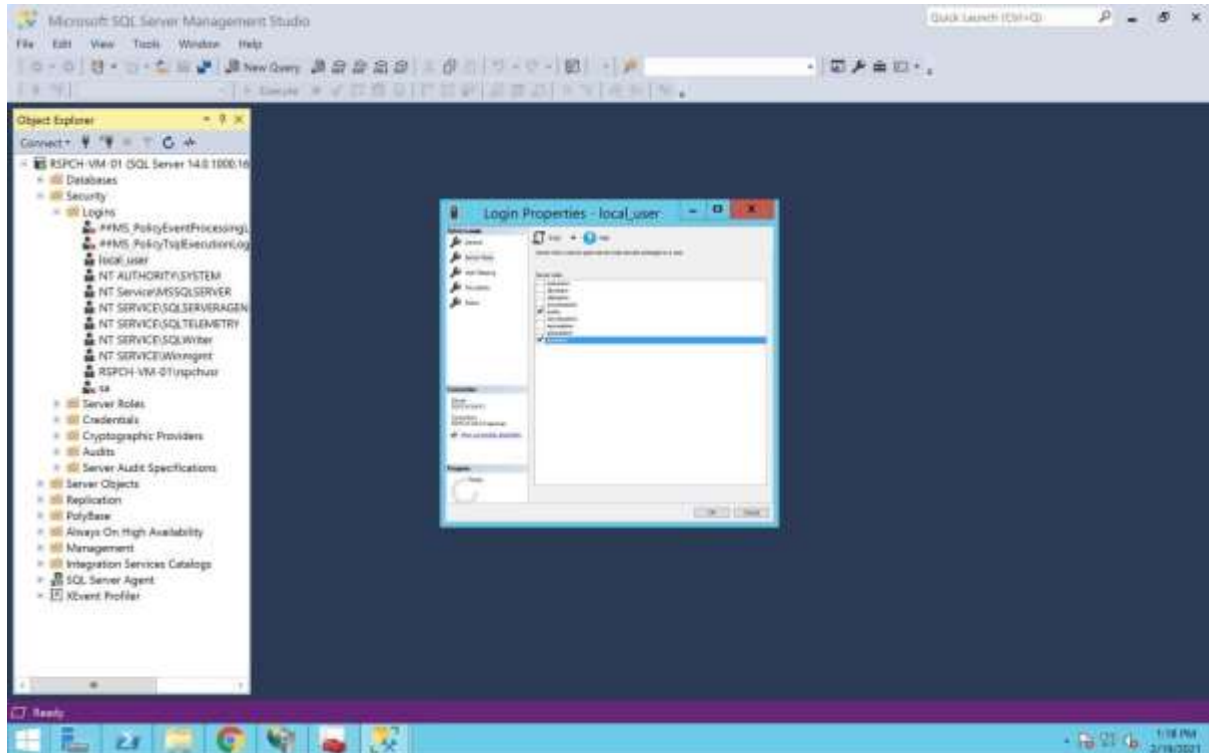
1. New Login

1. Open SSMS and authenticate to the server.
2. Expand the Security menu field by clicking on + character.
3. Right-click on Logins and click on New Login.
4. Set Login name (For example: local_user)
5. Choose `SQL Server authentication radio button.
6. Type the password for the user into corresponding input fields.
7. Disable Enforce password policy.



2. Server Roles

1. Click on Server Roles field.
2. Click sysadmin roles. It should be checked.



Configurations for SQL and Email

1. Configurations for SQL

In the following files change User ID and Password to the created SQL User credentials:

- ./CITI.Home.API/Hibernate.cfg.xml
- ./CITI.UserManagement.Web/Hibernate.cfg.xml
- ./CITI.CommonData.Web/Hibernate.cfg.xml


```
hibernate.cfg.xml
CITI.CommonDataWeb > hibernate.cfg.xml
1  <?xml version="1.0" encoding="utf-8" ?>
2  <hibernate-configuration xmlns="urn:hibernate-configuration-2.2">
3    <session-factory>
4      <property name="connection.provider">NHibernate.Connection.DriverConnectionProvider</property>
5      <property name="connection.isolation">ReadCommitted</property>
6      <property name="connection.driver_class">NHibernate.Driver.SqlClientDriver</property>
7      <property name="connection.connection_string">Data Source=localhost,1433;Initial Catalog=CR_CommonData;Persist Security
      Info=True;User ID=local user;Password=yourpassword</property>
8    </session-factory>
9
10     <property name="current_session_context_class">thread local</property>
11     <property name="adonet.wrap_result_sets">true</property>
12     <property name="dialect">NHibernate.Dialect.MsSql2012Dialect</property>
13     <property name="show_sql">true</property>
14
15     <property name="hbm2ddl.auto">update</property>
16     <property name="hbm2ddl.keywords">auto-quote</property>
17
18     <mapping-assembly>"CITI.CommonData.DAL"</mapping-assembly>
19   </session-factory>
20 </hibernate-configuration>
```

2. Configurations for Email

In the following files change email and password to your created Gmail account:

- ./CITI.CommonData.Web/Web.config
- ./CITI.Tools/Web/UI/Controls/Web.config
- ./CITI.UserManagement.Web/web.config